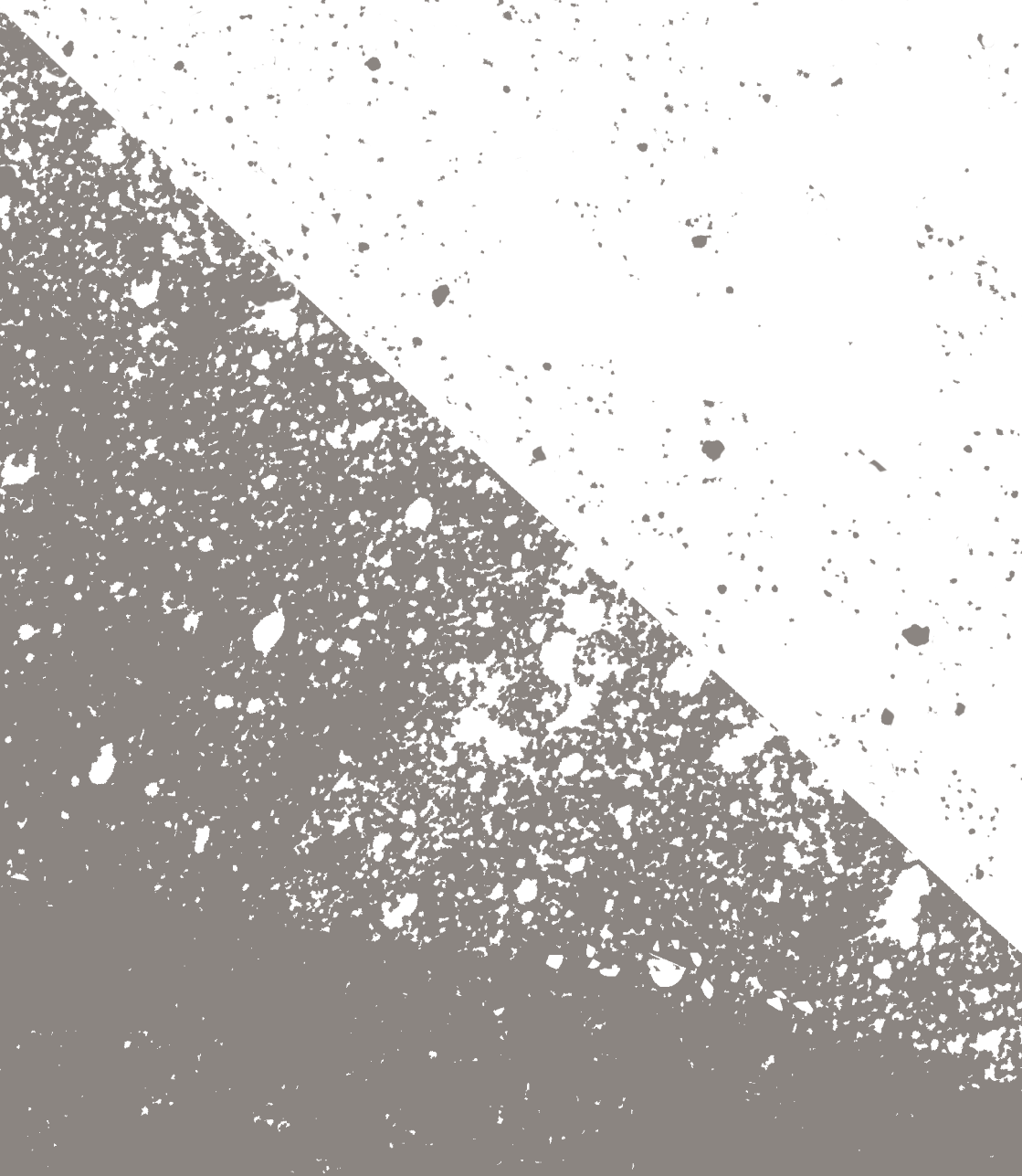


HOCKER HEINRICH



It is impossible
that knowledge
is the highest
good.

Quote Heinrich von Kleist in a letter dated February 5, 1801

Photo The permanent collection at the Kleist Museum in Frankfurt (Oder) has been furnished with HOCKER HEINRICH.

History

3

HOCKER HEINRICH was designed by Panatom with Matthias Froböse. The stool gets its name from the German playwright Heinrich von Kleist (1777–1811). The first edition of the stool has been appointed to the permanent collection at Kleist-Museum in Frankfurt (Oder). The exhibition is structured to follow the cannon of Kleistian interpretative works: segments of the floor create a topography

that the visitor can explore; highly polished steel rods stand against the darkness amidst interactive light displays generating excerpts from Kleist's work. This contemporary interpretation creates fresh new paths in the mediation of literature and represents a strong inspiration for HOCKER HEINRICH. The unwieldiness of Kleistian language finds its counterpart in the heaviness of concrete.





**HOCKER HEINRICH,
steel and fibre-reinforced
lightweight concrete, sealed
surface, 45×40×35cm,
ca. 36kg, -35°C to 800°C,
durable up to 200kg,
light grey, anthracite or
individually pigmented upon
request, felt cover, indoor or ⁵
outdoor use, one-of-a-kind
design and pore structure,
hand-made in Berlin.**

Photos Every angle of observation significantly alters the perceived form of the stool due to the asymmetric positioning of the concrete facets.

Showroom Panatom Gallery Torstraße 100 10119 Berlin
+49 (0)30 60930300 hello@panatom-gallery.com

www.hocker-heinrich.de



6

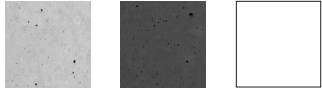
Form

The precise and elegant form of HOCKER HEINRICH's delicate concrete body is captivating. Smooth outer surfaces stand in complimentary tension to the faceted interior forms. Light and shadow create a game of shifting perspectives depending on the angle of observation. While concrete furniture has tended towards compact and cubic structures, HOCKER HEIN-

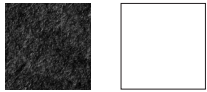
RICH reinterprets the material with a new approach that renders its technical execution a considerable challenge. The stool is hand-made in Berlin. The individual surface structures created during the manufacturing process give each stool a unique appearance, making it a one-of-a-kind. The weatherproof character of concrete also renders the stool suitable for outdoors.



Concrete pigmentation
light grey and anthracite
individual pigmentation upon request



Felt colour
dark grey cover
other felt colours upon request



8

Styles

Each HOCKER HEINRICH has its own individual style. The concrete surfaces vary from piece to piece due to air pockets that develop during the setting process. The stool is generally available in anthracite or light grey; however, the concrete can also be pigmented other colours upon request. For additional comfort we offer a dark grey stool

cover. The cover consists of high quality 100% virgin wool felt. The accompanying felt gliders, made from the same material, protect the floor and make it easier to move the stool. The seat cover is also available in other colours upon request. We are happy to reply to all inquiries and requests through the website.



Care Instructions

Material characteristics

Cement is a mineral material that absorbs moisture. After being washed it is wet and will dry out again. Should coloured liquids come into contact with the cement, permanent residues or stains may result. Depending on the type and quality of the liquid, the surface of the cement might be penetrated with discolouration. In order to prevent this from occurring, the cement we use undergoes a waterproofing process, whereby liquids remain predominantly on the surface. The durability of cement against chemical exposure or mechanical strain is, however, not improved by the waterproofing.

Mechanically stressing the material with, for example, extreme temperatures through hot water, can lead to hairline fractures in the cement. Contact with acidic liquids such as ascectic, fruit or citric acids should be avoided and the cement should be rapidly cleaned should soiling occur.

Regular cleaning

In cases of mild soiling, a soft sponge and mild soap (such as dishwashing liquid) can be used. Please do not use any citrus cleaners or abrasive agents. We recommend HMK P24 Liquid Stone Soap according to the manufacturer's specifications.

Heavy soiling

To remove large stains made from wine, coffee, etc., the cement can be soaked for extensive periods in order to reach a newly uniform optical appearance.

Before taking any steps to treat or clean the cement, we recommend conducting a preliminary spot test. We can only claim liability for damages that result from faulty craftsmanship or for possible damages incurred by a third party.

Photo The permanent collection at the Kleist Museum in Frankfurt (Oder) has been furnished with HOCKER HEINRICH.



Wohnecke
immer auf der Suche nach
Wahrheit



Showroom

Panatom Gallery

Torstraße 100, 10119 Berlin

www.hocker-heinrich.de